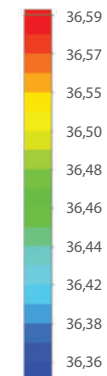
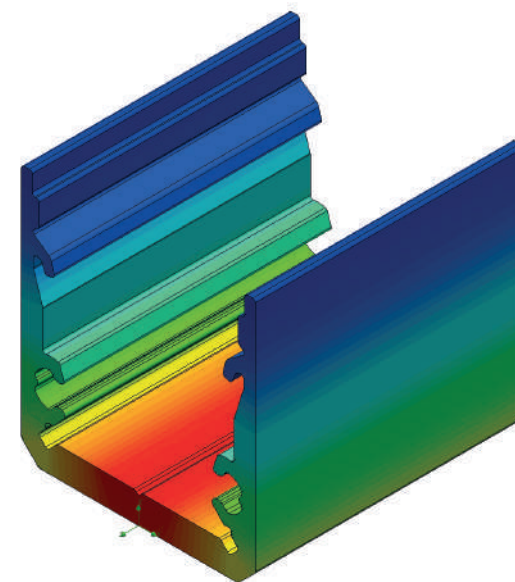
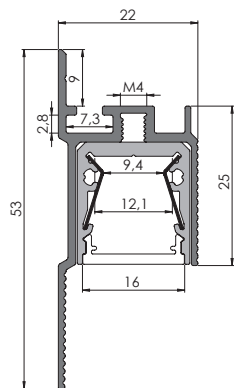


# ALU COVE 1 LED PROFILE

ALU-COVE 1; 53 x 22 mm

High quality aluminium extrusion which has been designed to be recessed into walls. This innovative concept wall solution, has been designed with Groove 15 LED Profile. This feature simplified installation, making it a simple two-step process. By using perforated edges, the base is plastered and screwed to a wall & insert profile slides in, secured by M4 thread screw. Additionally, cove profile is suitable for our linear connectors allowing for the creation of uniform lines of light up to desired length. Together with it comes dedicated end caps making it a complete aesthetic design. This all gives the ability to wash down a wall utilising the 15 degree lens with homogenous light, without a complicated installation process.



Temperature (Solid) [°C]  
Ambient temperature : 25° C

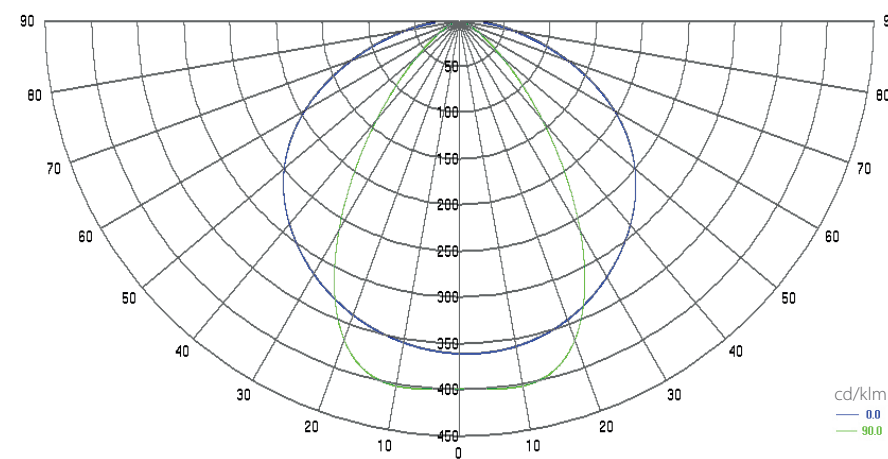
Installation mode for test purpose: surface



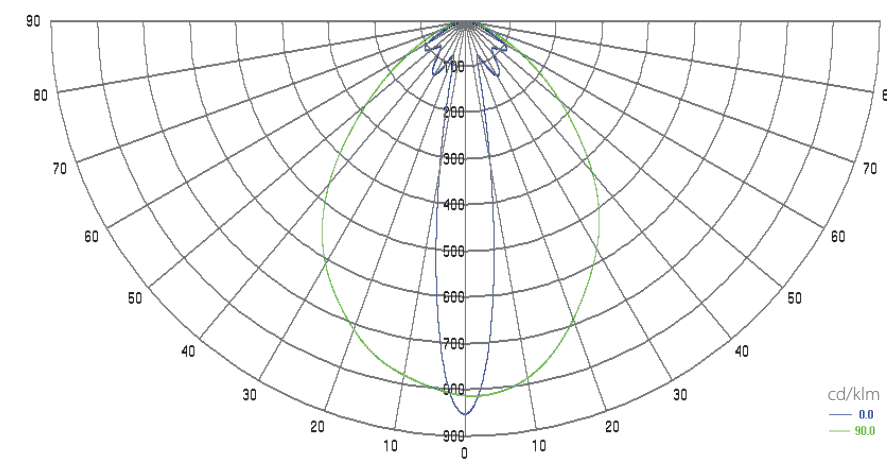
Cross section view of ALU COVE 1

Polar Candela Distribution Plot Using Missed Rays

Light distribution diagram with AB-SL FL / with reflector



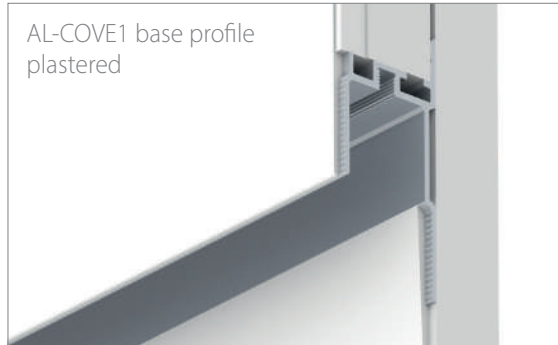
Light distribution diagram with AB-SL15 FL-L15 / without reflector



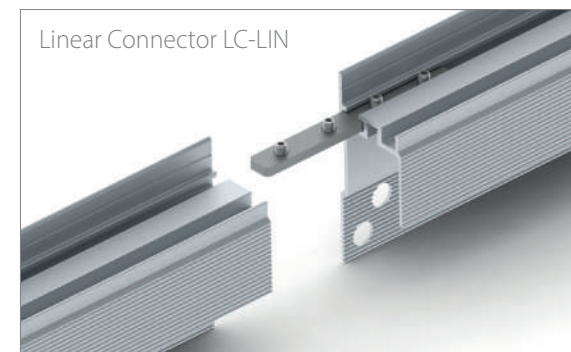
AL-COVE1  
AL-GR15 FL  
AB-GR15 FL  
AL-REF13-B60



Aluminum end caps  
EC-GR15 FL-H1



AL-COVE1 base profile  
plastered



Linear Connector LC-LIN



GR15 FL mounted,  
secured by M4 screw

AL-GR15 FL  
AB-GR15 FL  
AL-REF13-B60

EC-GR15 FL-H1

AL-COVE1  
AL-GR FL  
AB-GR15 FL  
AL-REF13-B60  
EC-GR15 FL-H1