



A BRIGHTER FUTURE

UK **LED** *lighting*

## Skylite LED Panel 1500X300

Emergency

PMMA LGP

TP (a) Fire Rated

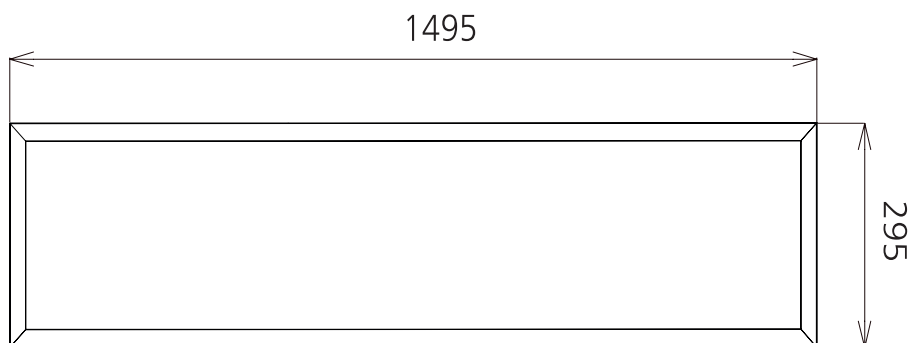
LDT /IES files

L 70

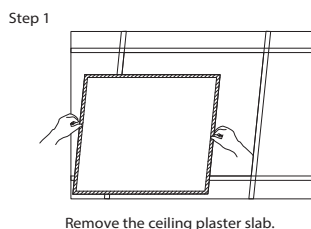


Part No.	UKSKL-SM-40-1500-300-45W-FLF	
Dimensions (mm)	1495 * 295* 10 - (1501*301*53 Surface Mount Kit)	
LED Type	SMD 2835	
Lumen	4450	
CCT	4000K (3000k , 5000k , 6000k also available )	
Beam Angle	120°	
Power Consumption	45 Watts	
Volt/AC	100-240	
Efficiency	100 Lumen per watt	
Dimmable / Driver options	DALI , 1-10v, Flicker free ( class II)	
Life Expectancy	50,000 Hours L70	
Material	Aluminium, PS, SPCC	
Accessories	Suspension / Surface Mount Kits	

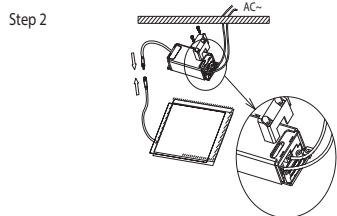
### Dimensions



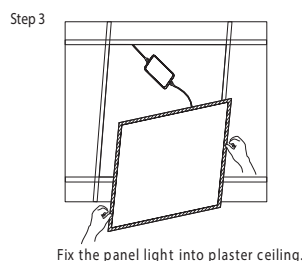
## Recessed



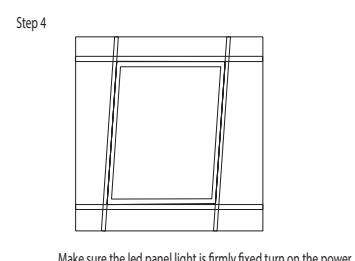
Remove the ceiling plaster slab.



Fix 2pcs of clips to one side of frame by screw, then insert the frame into ceiling.

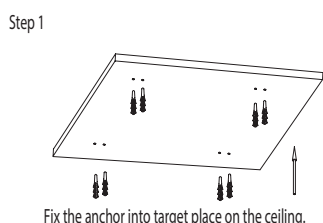


Fix the panel light into plaster ceiling.

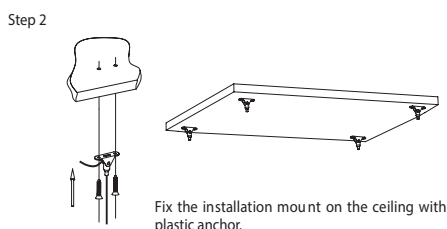


Make sure the led panel light is firmly fixed, turn on the power.

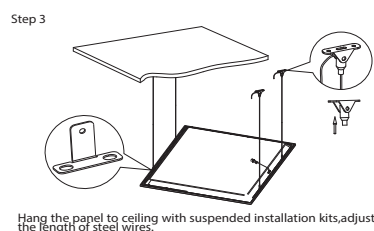
## Suspended



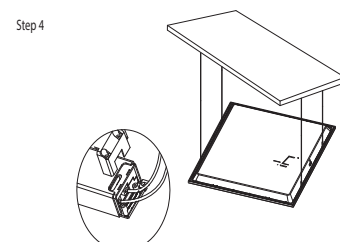
Fix the anchor into target place on the ceiling.



Fix the installation mount on the ceiling with plastic anchor.

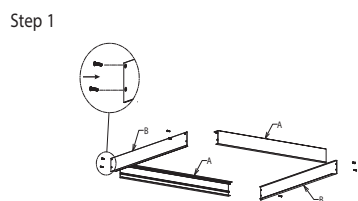


Hang the panel to ceiling with suspended installation kits, adjust the length of steel wires.

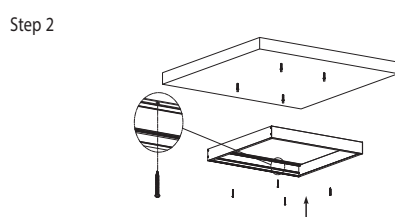


Feed the main AC wire in driver terminal block respectively, turn on the power.

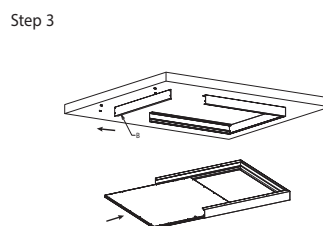
## Surface Mount Frame



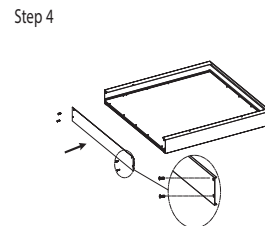
Assemble the surface mounted frame and fix by screws.



knock the plastic anchor into ceiling, fix the surface mounted frame on the ceiling by screws.



Unscrew the side frame then take out, connect the panel light to power supply, insert the panel light into the frame.



Fix the side frame back by screw.

## Part numbering key

UK LED Lighting Skylite LED Panel

Size

Watts

DA : DALI dimming  
OT : 1-10V dimming  
SW : Switched  
FLF : Switched Flicker free

**UKSKL-SM-40-1500X300-45W-FLF-EM**

CR : Ceiling Recessed  
SU : Suspension Kit  
SM : Surface mount kit

CCT 3000K,4000K,5000K,6000K

Emergency ready