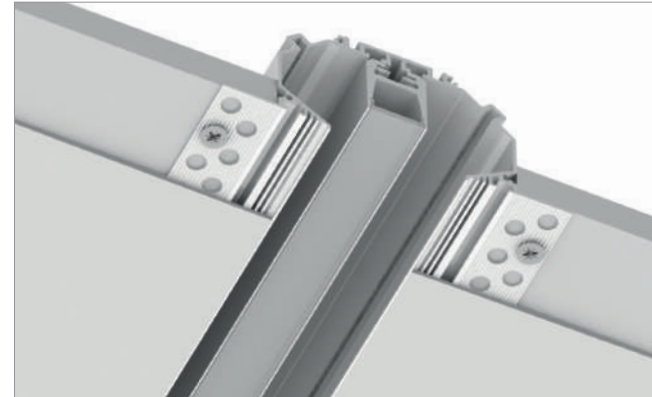
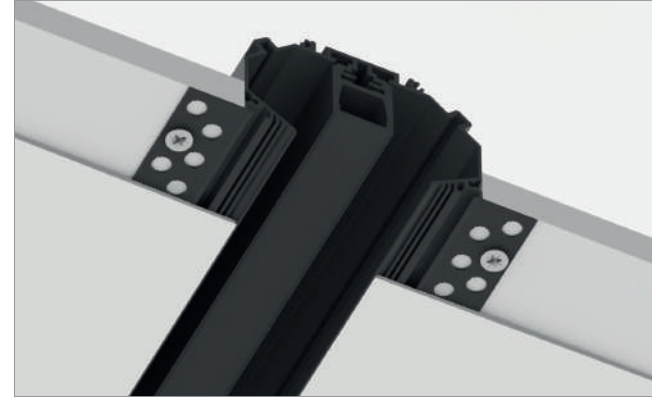
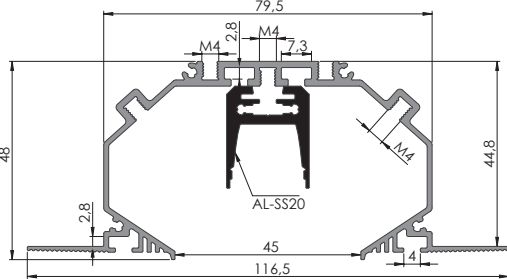


RPL45 with Groove 20

RPL45 US; 48 x 116,5 mm

We proudly present our newest and most innovative product from Plaster Board Line – RPL45 US. This solution includes a base which can be used with a suitable profile of your choice, giving you the variety of options and freedom of design. Chasing the market's needs, the anodized black base finish creates depth allowing your elegant line of light to shine. The chosen profile can be easily attached to the base by using M4 standard screws. Our new AL-INS-SS20B will be outstanding, colour matching fit to a complete lamp. The profile comes with high-quality anodized black end caps. Installation process is as easy as for other Plaster Board profiles thanks to perforated sides of the extrusion. All above features provide you complex solution that can be modified (attached profile) up to your needs, whenever required.



AL-RPL45 US
AL-SS20
AB-SS20



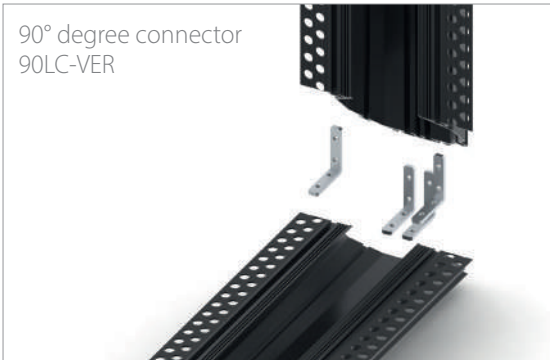
Aluminum end caps
EC-RPL45 US-H3



Aluminum end caps
EC-INS-SS20B-H3



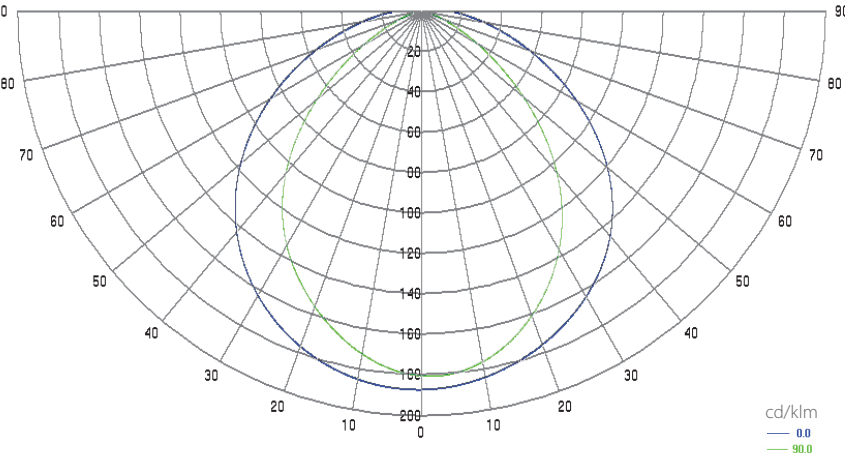
Linear Connector LC-LIN



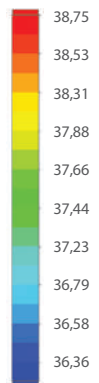
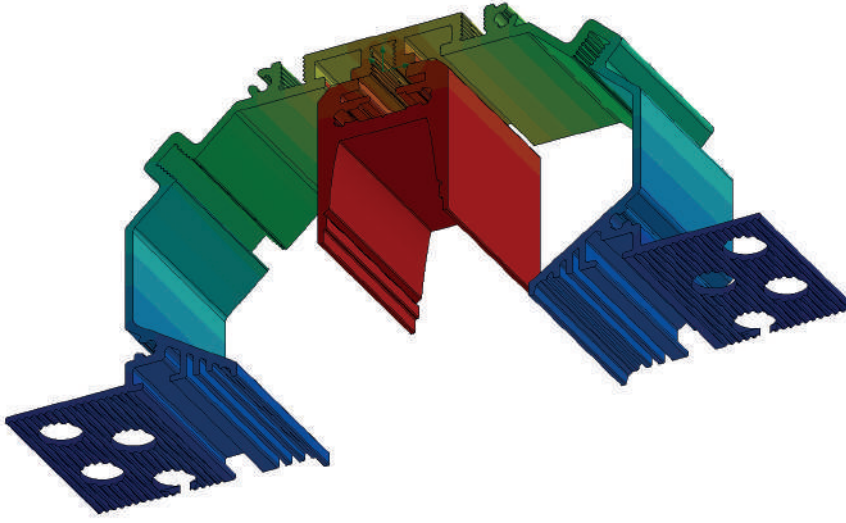
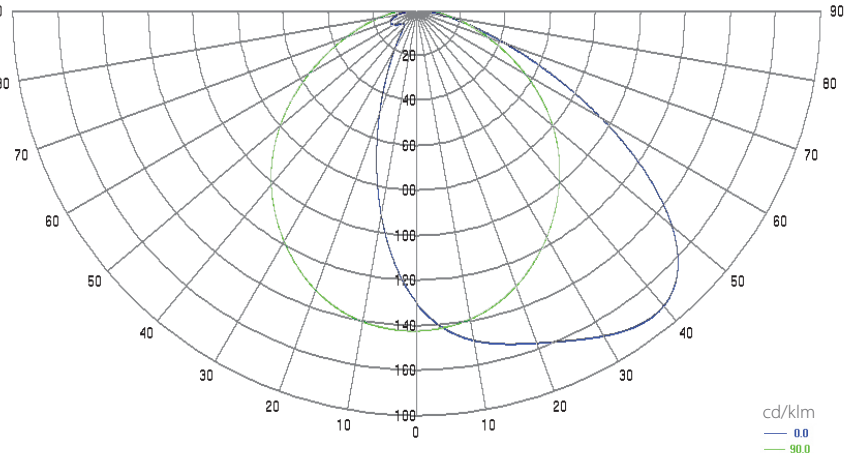
90° degree connector
90LC-VER

Polar Candela Distribution Plot Using Missed Rays

Light distribution diagram (central mounted profile)



Light distribution diagram (side mounted profile)



Temperature (Solid) [°C]
Temperature ambient: 25°C
Total power: 21,6W/m (90 LEDs)
LED stripe: 10-5060

AL-RPL45 US
AL-INS-SS20B
AB-SS20B
EC-INS-SS20B-H3

cd/klm
— 0.0
— 90.0