

AL-SL15  
AB-SL  
EC-SL15  
MC-SL15



MC-SL15 Mounting Bracket

## SLIM LINE 15 mm

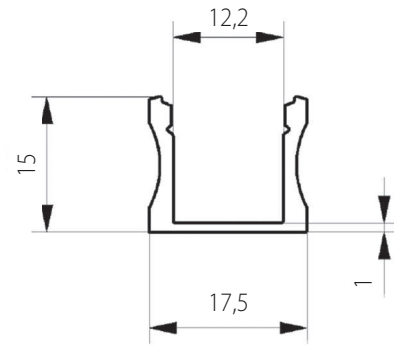
SL15; 15 x 17,5mm

### Features

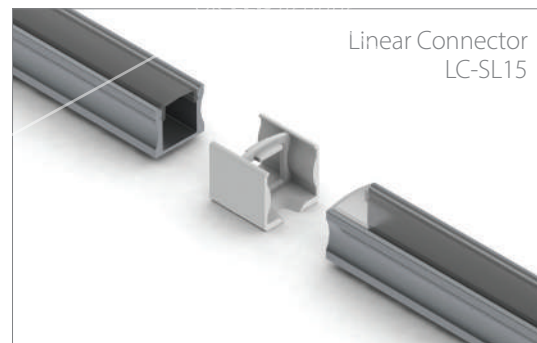
High quality diffusers  
No spotting  
Walk over safe  
UV resistant  
Available in lengths up to 3 metres  
Anodised Aluminium  
RAL colours on request

### Applications

Furniture (Kitchen / Office)  
Shelving  
Coffers  
Pelmets  
Ceiling mounted



EC-SL15  
End Caps



Linear Connector  
LC-SL15

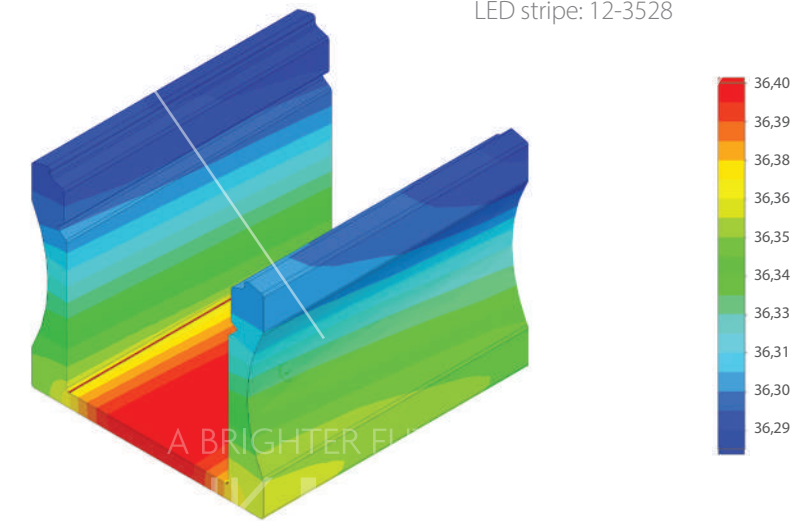


SL15 with  
Aluminum  
accessories

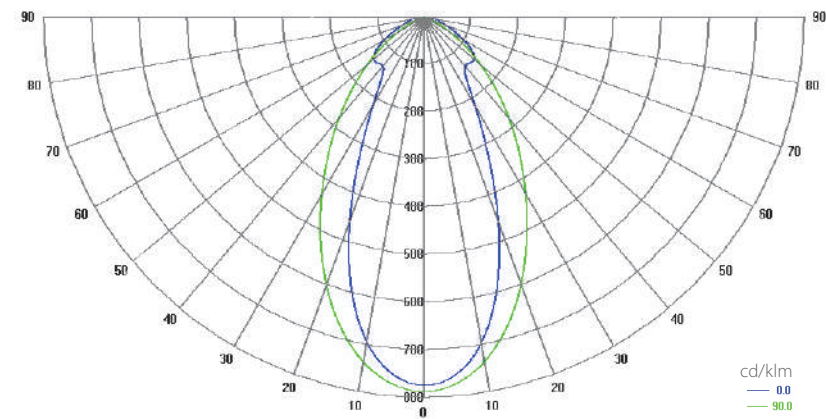
### SL15 ANALYSES

#### Temperature (Solid) [°C]

Temperature ambient: 25°C  
Total power: 8 W/m (96 LEDs)  
LED stripe: 12-3528

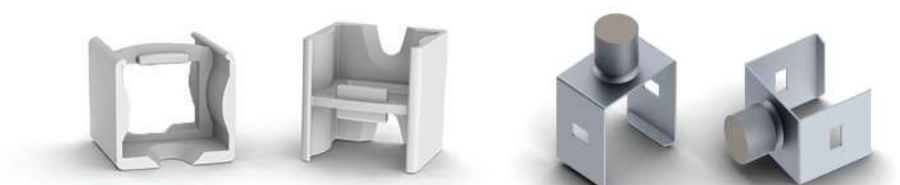


#### Polar Candela Distribution Plot Using Missed Rays



### DESCRIPTION

Is a surface mount version of Recessed 15mm, and similarly suitable for numerous interior lighting design applications as the aforementioned - kitchen and office - furniture e.g. However, because it can also be supplied with 30 degree and 60 degree optic lensed diffusers, it is very adaptable for retail shelving where accented or more intensive lighting on specific products is required.



LC-SL15  
Linear Connector