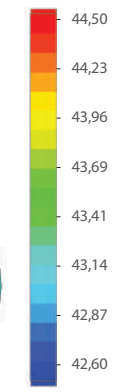
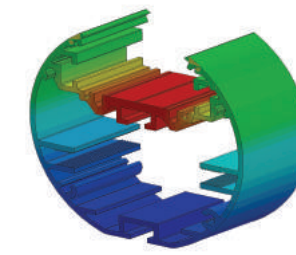
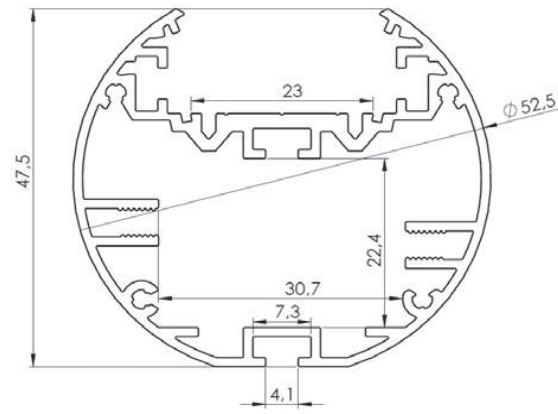


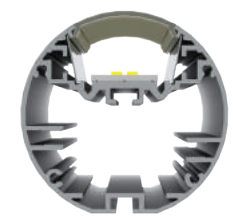
# ALU ROUND 52 LED PROFILE

AL-RO52;  $\phi 52$  mm

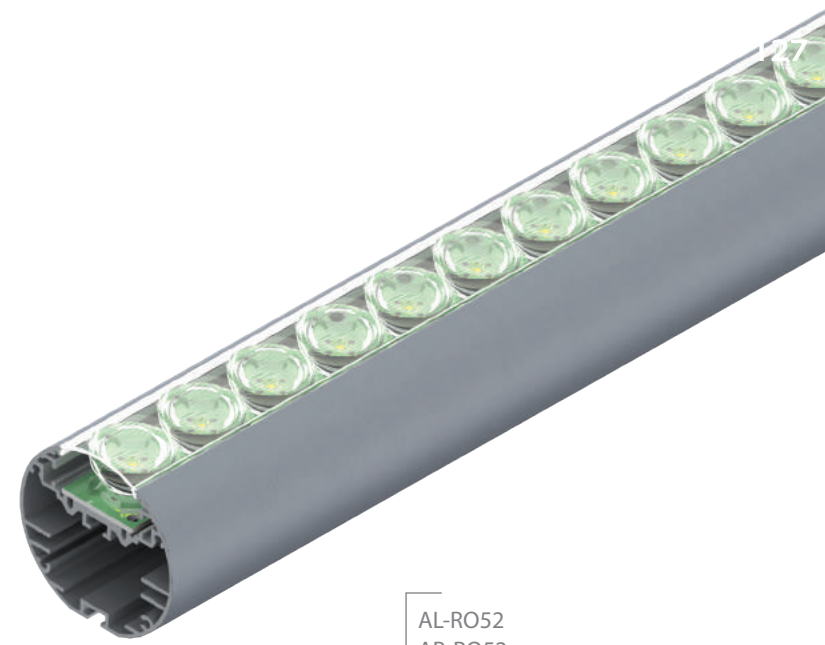
It is a new round profile made of anodised aluminum, designed for mounting LED light sources. The diameter is 52mm & it allows the use of PCB with a width of 20mm made in the Zhaga standard (contoured channels for mounting screws), as well as hiding inside a linear power supply with standard dimensions of 30x21mm. Thanks to a sufficiently large heat transfer surface, it was also possible to reduce the weight of the profile. It can be safely used for high power LED strips (36W/m) not exceeding the temperature of 45 degrees Celsius (ambient temperature 25 degrees C).



Temperature (Solid) [°C]  
 Temperature ambient: 25°C  
 Total power: 36W/m (72 LEDs)  
 Installation mode for test purpose: pendant

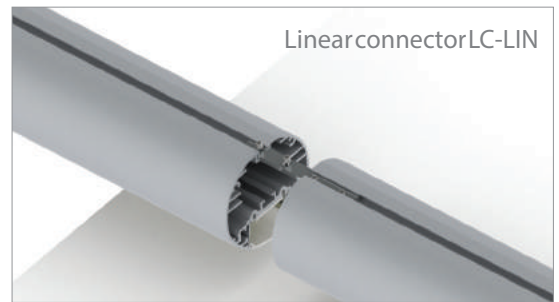


Cross section view AL-RO52



AL-RO52  
 AB-RO52

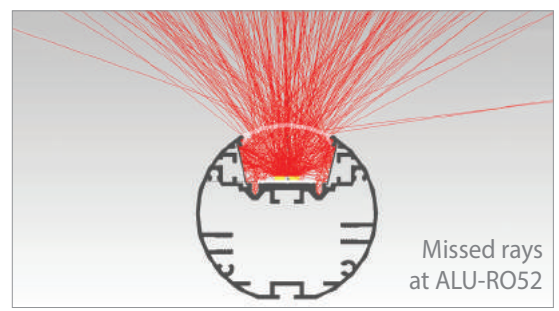
Depending on the place of application, we offer our clients two types of UV & damage resistant covers: matt and transparent. In addition, the ALU ROUND52 is equipped with a reflector thanks to which the luminance of the lens is aligned and the luminaire is improved by 10-18% depending on the light source.



Linearconnector LC-LIN



90° degree connector 90LC-HOR

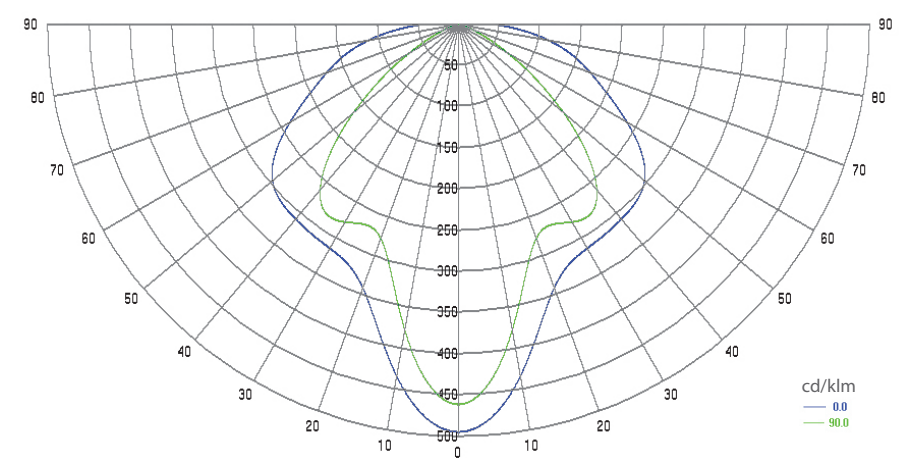


Missed rays at ALU-RO52

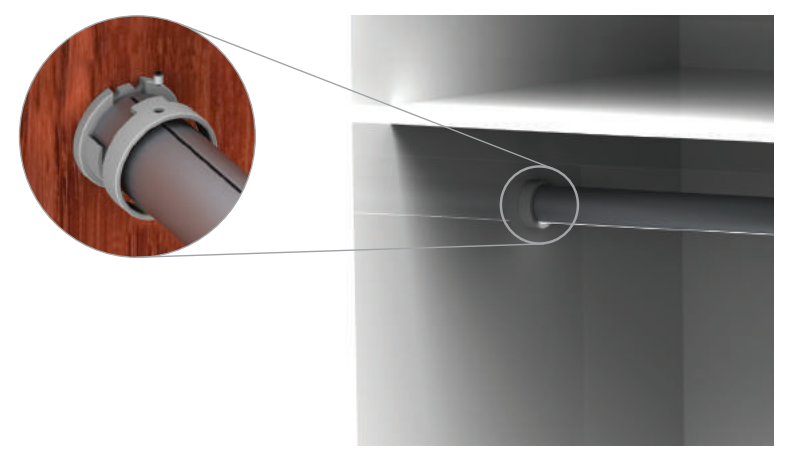


90° degree connector 90LC-HOR

Polar Candela Distribution Plot Using Missed Rays



Installation of the Alu Round 52 profile in the Wardrobe



AL-RO52  
 AB-RO52



AL-RO52  
 AB-RO52



Aluminum end caps  
 EC-RO52-H1, EC-RO52-H2