



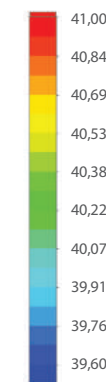
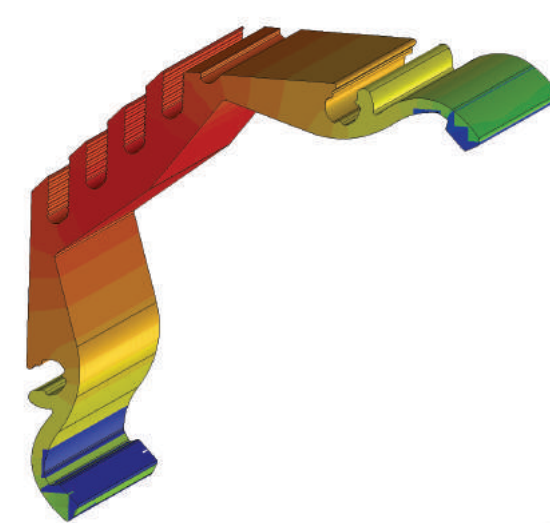
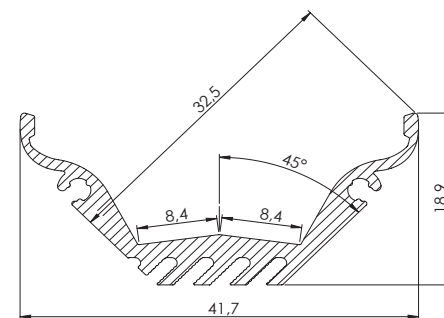
AL-45W  
AB-SLW10-K/M/50M

## ALU45 WIDE LED PROFILE

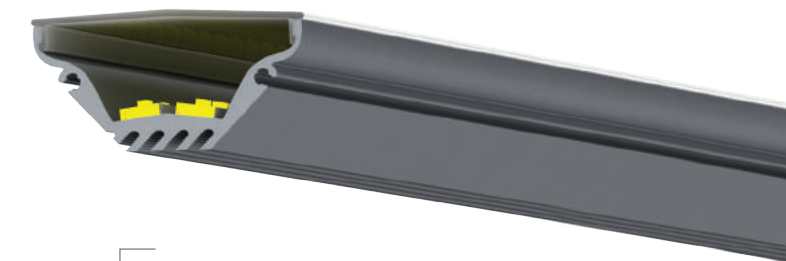
AL-45W; 18,9 x 41,7 mm

The ALU45 WIDE profile is a high quality corner mount product. Optimised interior design allows for even illumination of the lens over the entire width. To achieve this effect it is necessary to use 2 rows of LED PCB with a maximum width of 8mm each. The specially designed shape allows for a wide angle of illumination.

A large mass of profile (0.38kg/m) with a large heat transfer surface (built-in heat sink) allow the LEDs to run at a total power of 25W/m. The luminaire profile and fittings are anodised. The diffuser limits the glare and provides even illumination. Simple assembly allows quick installation.



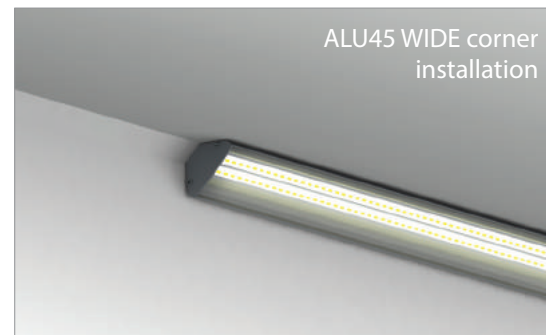
Temperature (Solid) [°C]  
Temperature ambient: 25°C  
Total power: 21,2W/m  
(2 x 10,6 W/m - 2 x 126 LEDs)  
LED stripe: 2 x 6-DURIS



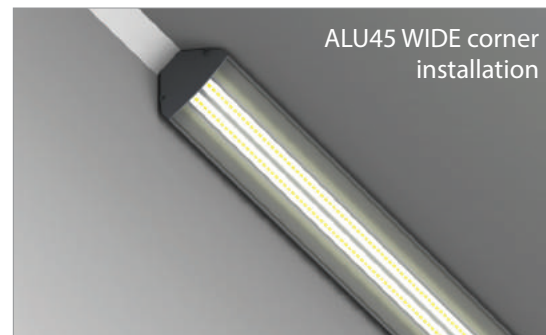
AL-45W



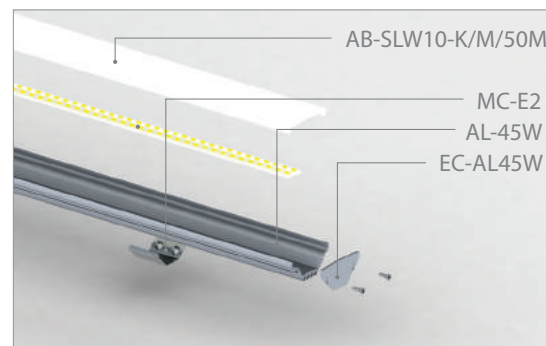
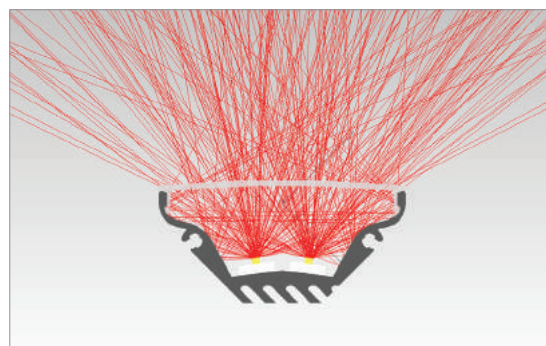
AL-45W



ALU45 WIDE corner  
installation



ALU45 WIDE corner  
installation



AB-SLW10-K/M/50M  
MC-E2  
AL-45W  
EC-AL45W

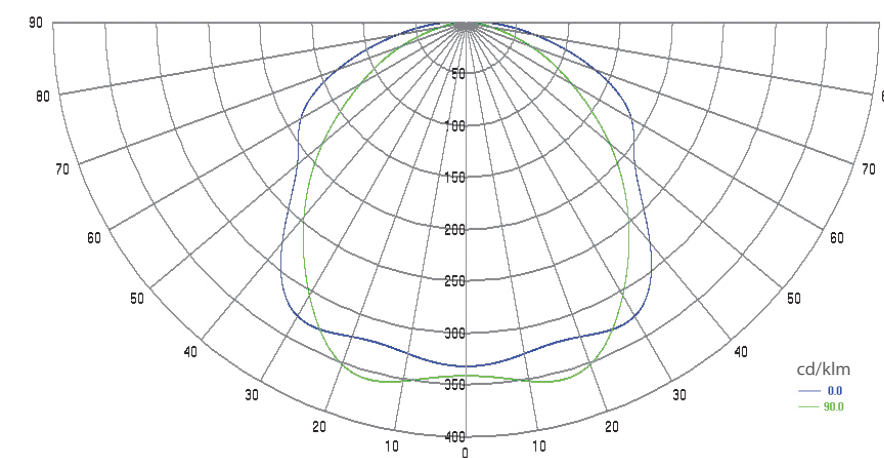


MC-E2  
Mounting Brackets



Aluminum end caps  
EC-AL45W

Polar Candela Distribution Plot  
Using Missed Rays



AL-45W  
AB-SLW10-K/M/50M

