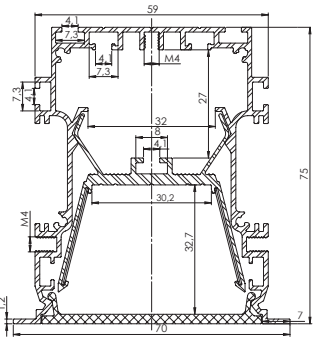


AL-RPL55
AL-RPL55-INS
MC-SPR-B
30-DURIS-NW
AB-PL55 or AB-PRI55

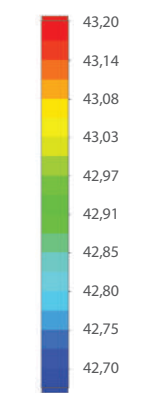
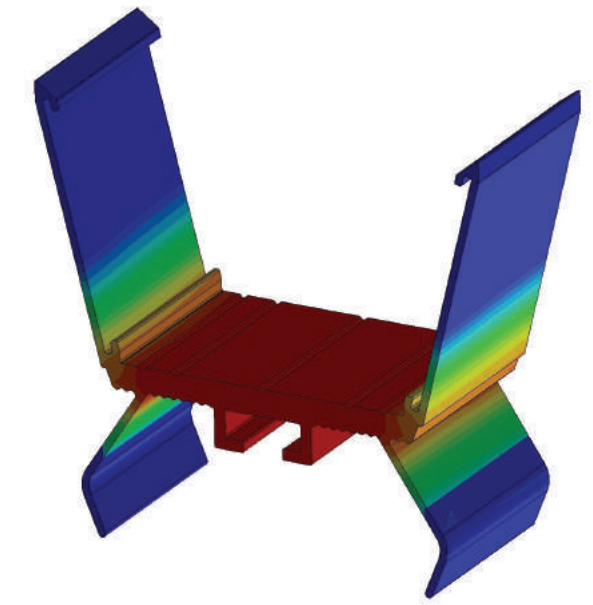
RPL55 LED PROFILE

RPL55; 70 x 75 mm

RPL55 is a high-quality product made of two aluminum profiles designed for mounting LED light sources. The RPL55 is designed to be installed in gypsum-plaster ceilings with special springs that facilitate quick and reliable operation, and above all, without the need to use any fitting tools. The base profile has space for inserting springs, linear and angular connectors.



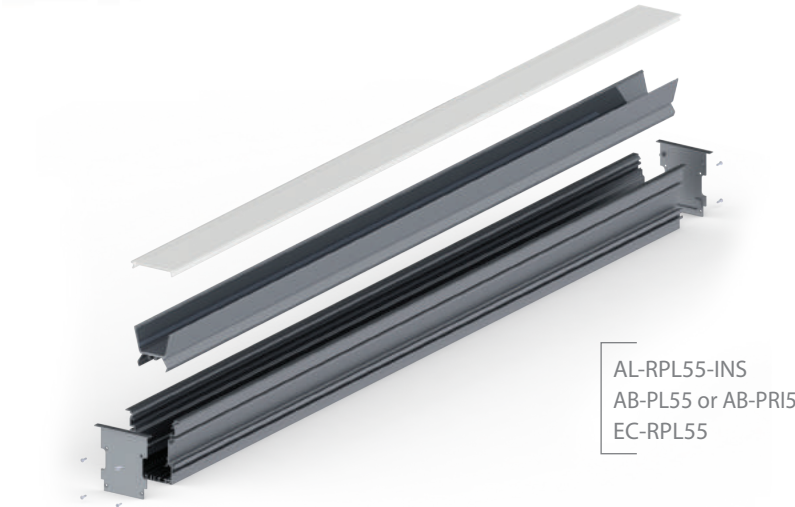
The interior of the heat sink is profiled in a special way that makes it easier for the light to reflect and therefore reduces the loss to a minimum. The radiator also acts as a reflector because it is equipped with dedicated mirrors made from polished high density aluminium (Vega 95) as standard to improve the reflection coefficient and thus increase the luminous efficiency of the luminaire by about 10-18% (depending on the applied light sources).



Temperature (Solid) [°C]
Temperature ambient: 25°C
Total power: 35W/m (72 LEDs)
LED stripe: 30-DURIS

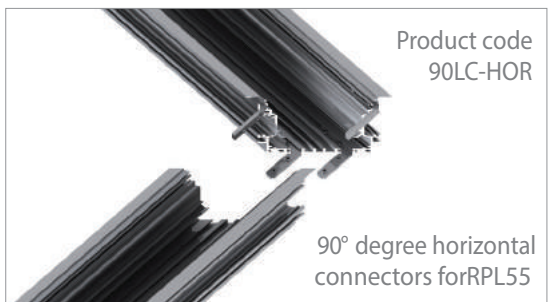


AL-RPL55
AL-RPL55IN
AB-PL55
MC-SPR-RPL55
MC-LOCK2



AL-RPL55-INS
AB-PL55 or AB-PRI55
EC-RPL55

Aluminum end caps
EC-RPL55



Product code
90LC-HOR

90° degree horizontal
connectors for RPL55



Insert profile with reflector
for RPL55 profile,
Product code
AL-RPL55-INS

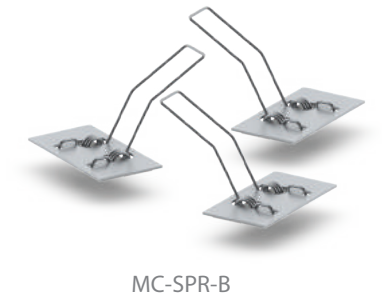
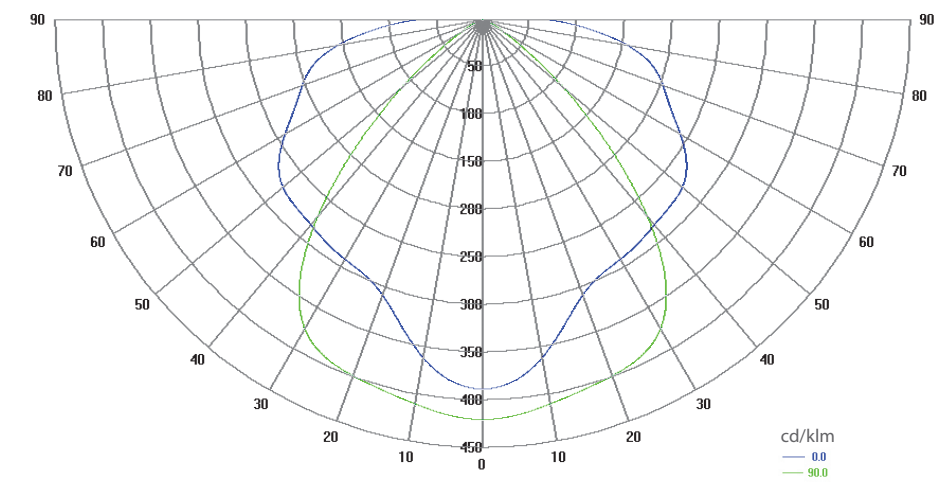


Linear connectors for
RPL55, product code LC-LIN



Finished installation of the
RPL55 profile in gypsum ceiling

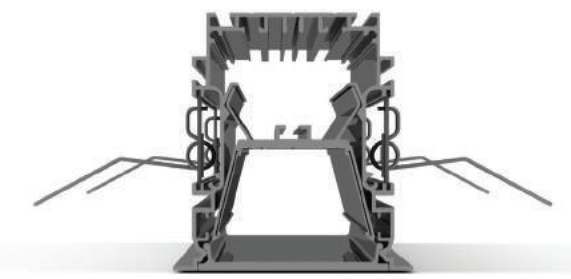
Polar Candela Distribution Plot
Using Missed Rays



MC-SPR-B



MC-KEY-RPL55



Cross section view
AL-RPL55