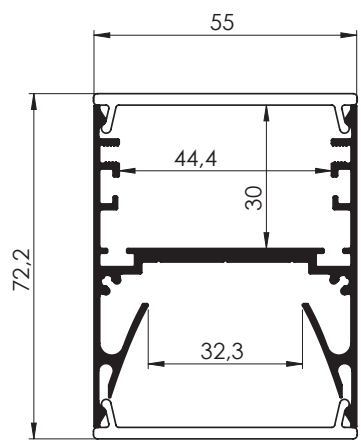




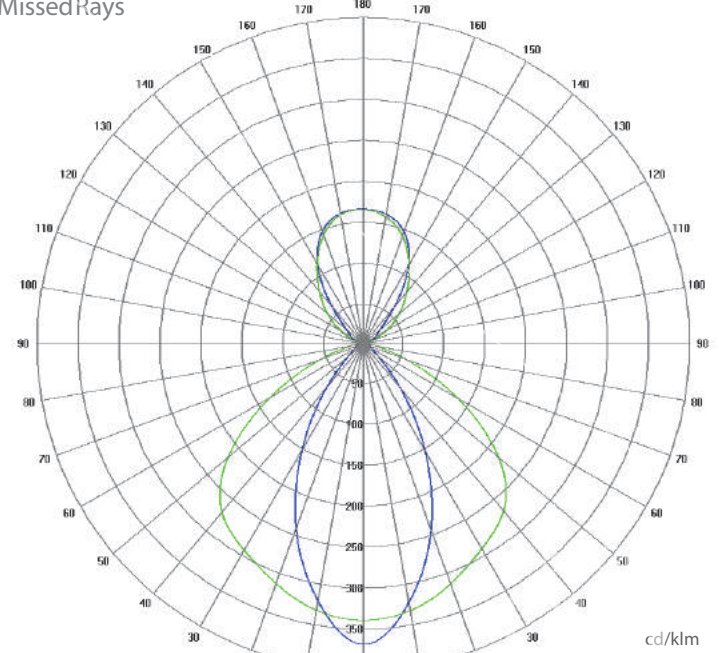
AL-DPL55  
AB-PL55

# DPL55 SURFACE/PENDANT

DPL55; 55 x 72 mm



PolarCandelaDistributionPlot  
Using Missed Rays



AL-DPL55  
AB-PL55x2  
MC-DPL55

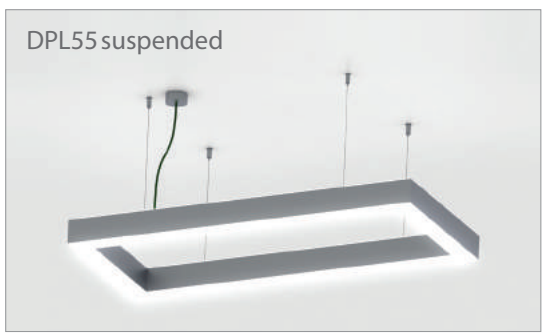


A BRIGHTER FUTURE  
UK LED lighting

DPL55 suspended  
from the ceiling



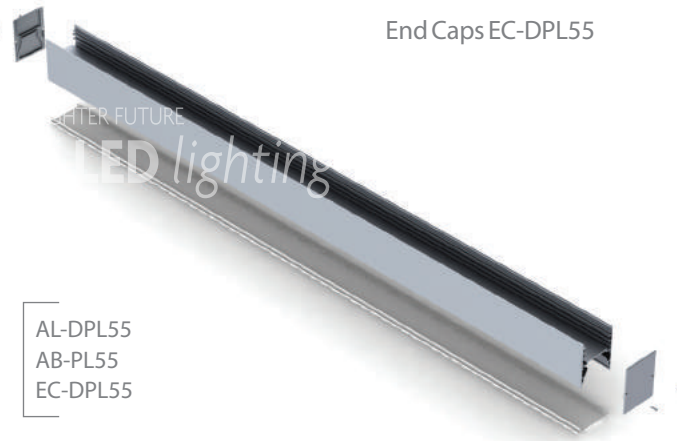
End Caps EC-DPL55



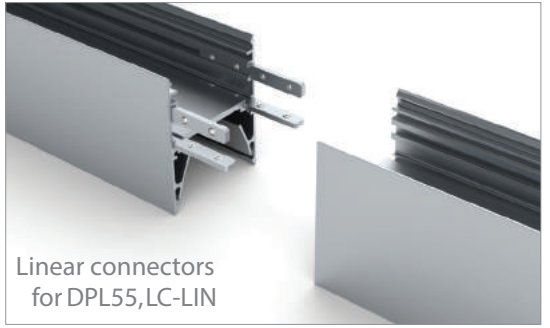
DPL55 suspended



DPL55 suspended



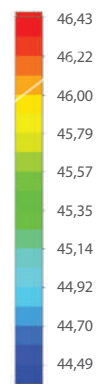
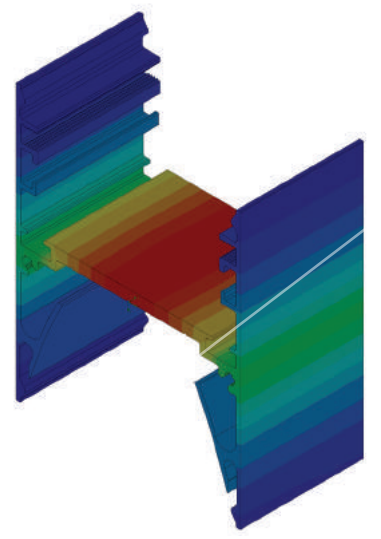
AL-DPL55  
AB-PL55  
EC-DPL55



Linear connectors  
for DPL55, LC-LIN



90° degree connectors for DPL55,  
vertical and horizontal



Temperature (Solid) [°C]  
Temperature ambient: 25°C  
Total power: 55W/m  
LED stripe: 30-DURIS, 10-5060



DPL55 surface  
installation option

A BRIGHTER FUTURE  
UK LED lighting