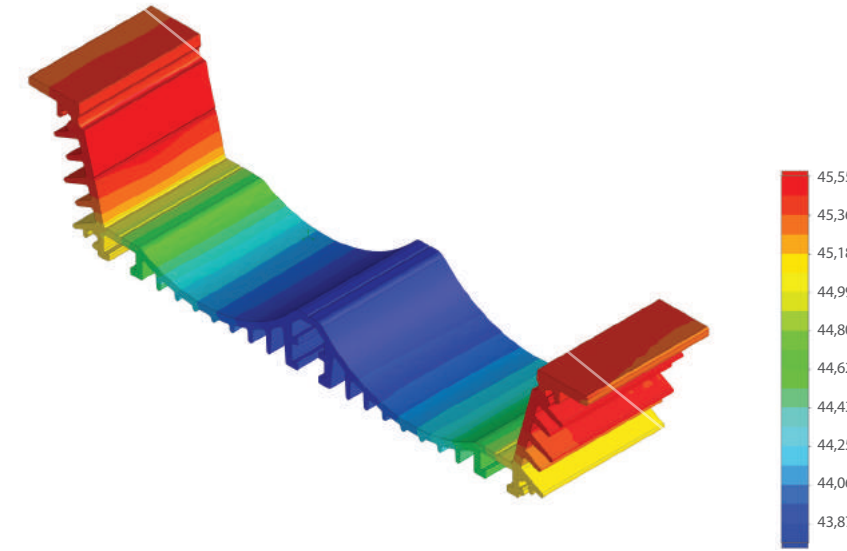
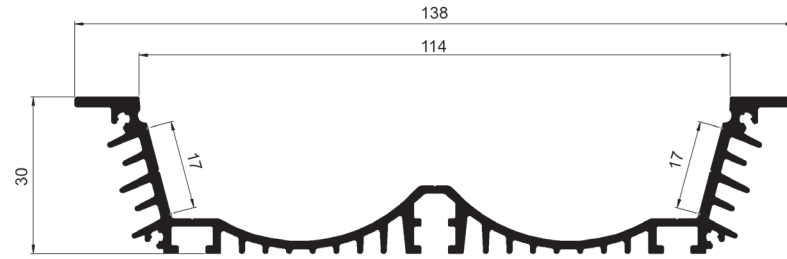


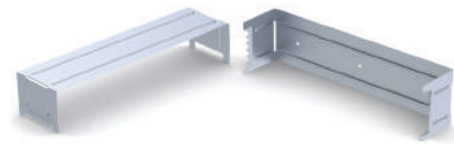
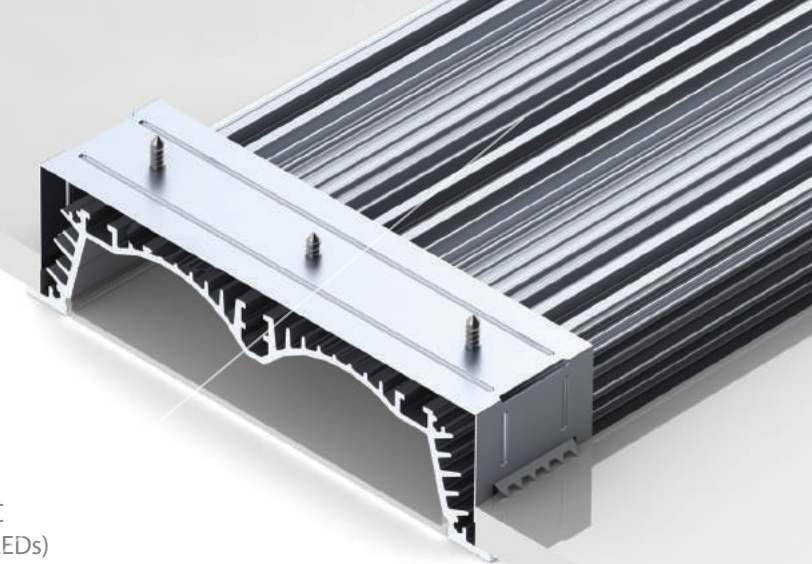
# RPLW116- ARCHITECTURAL LED PROFILE

RPLW116; 138 x 30mm

Is a new recessed heavy duty low profile, with a wide diffuser and 160 degree beam angle, which can handle power loads of 72Watts per metre. The side LED located, low design profile, is chiefly aimed at low construction gypsum ceilings with limited void space in both medium and higher hanging ceiling locations.



Temperature (Solid) [°C]  
 Temperature ambient: 25°C  
 Total power: 72 W/m (144 LEDs)



EC-RPLW116  
Mounting Bracket

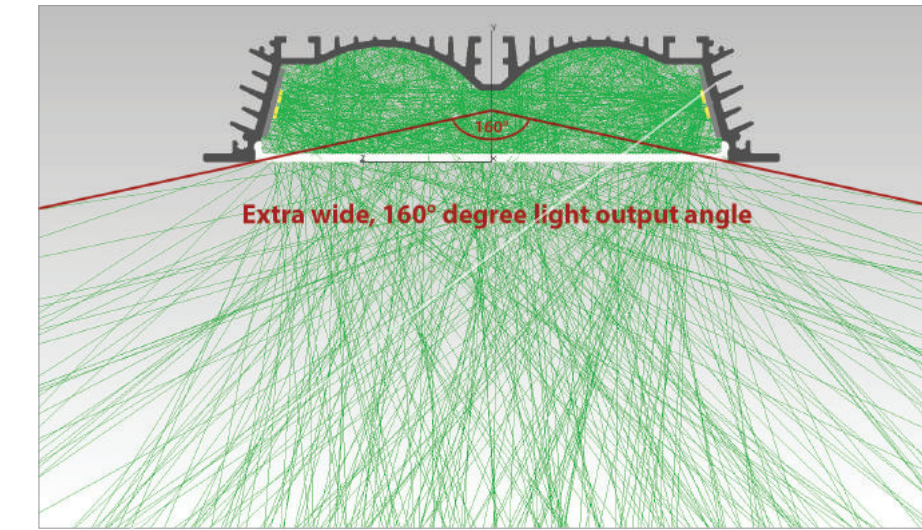


EC-RPLW116 End Caps



LC-RPLW116  
Linear Connector

AL-RPLW116  
AB-RPLW116  
MC-RPLW116



Polar Candela Distribution Plot  
Using Missed Rays

