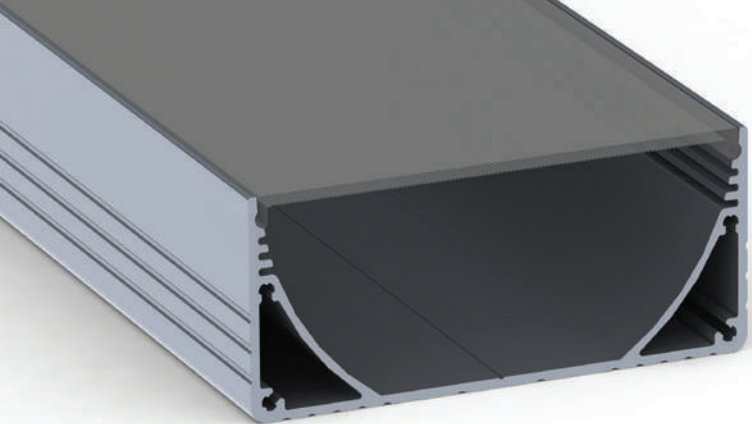


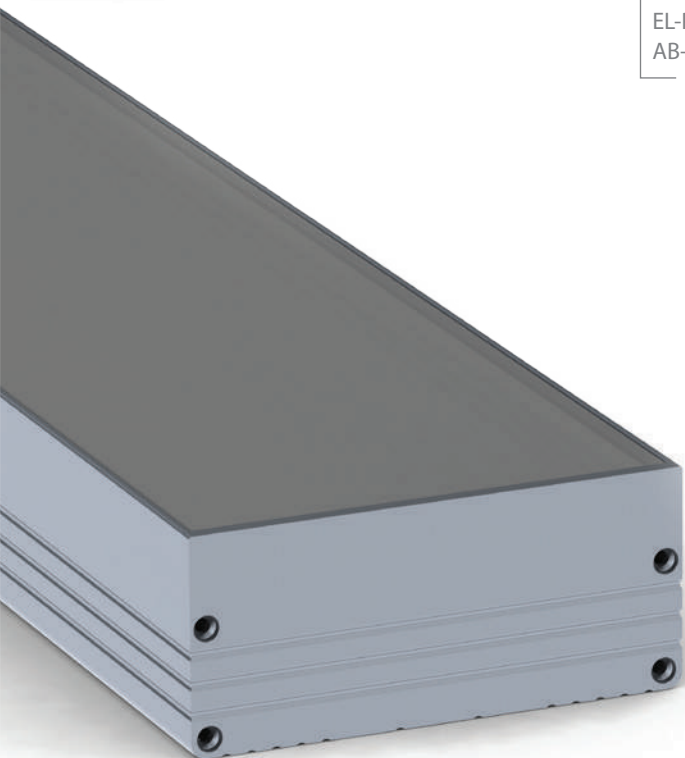
POWER LINE WIDE 80mm

PLW80N; 80 x 35mm

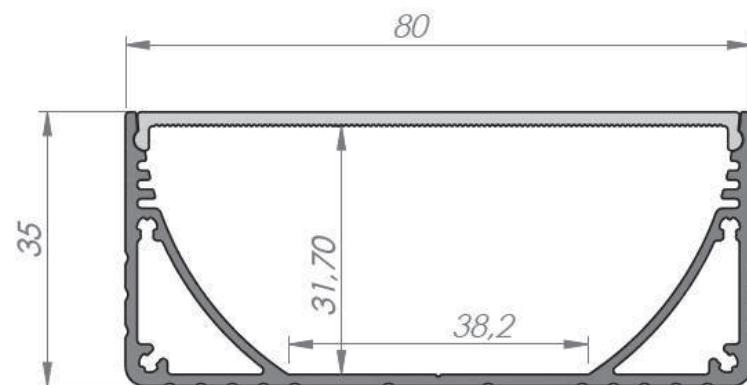
LED surface ceiling aluminium profile, provided in the usual high silver anodised finish, (80mm W x 35mm H) and can accommodate any chip LED PCB solution up to 35W/M, according to the light levels required. With its specially designed internal chamber, both to eliminate light loss and guide maximum illumination directly up towards the snap on diffuser, it's perfect for office and retail ceiling solutions where both appearance and effect are of equal importance.



EL-PLW80N
AB-PLW80



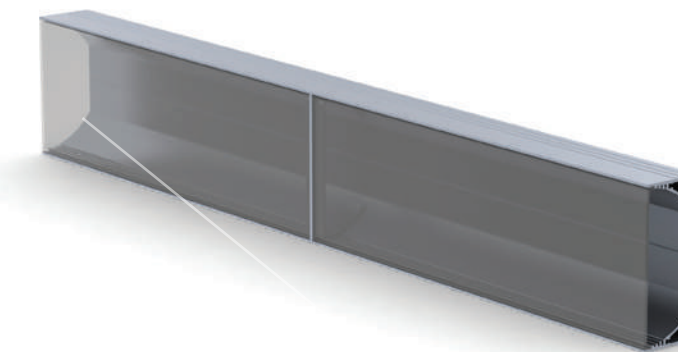
EL-PLW80N
AB-PLW80
EC-PLW80N



EC-PLW80N
Aluminum end caps



LC-PLW80N
Linear Connector



AL-PLW80N
Aluminum Profile



LC-PLW80N
Linear Connector



A BRIGHTER FUTURE
UK LED lighting
A BRIGHTER FUTURE
UK LED lighting