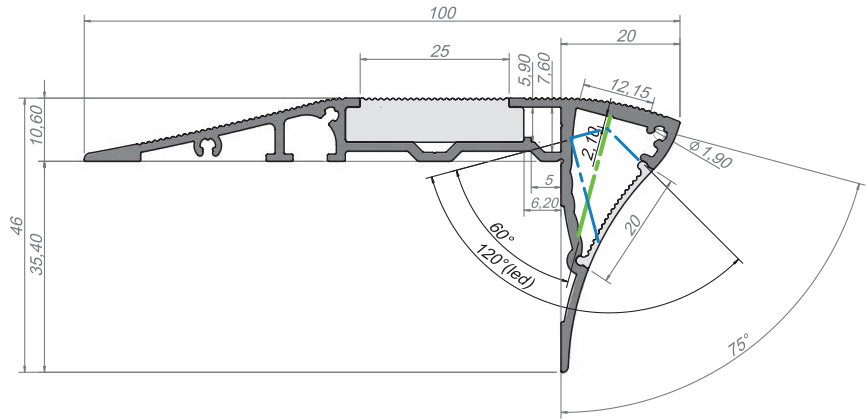


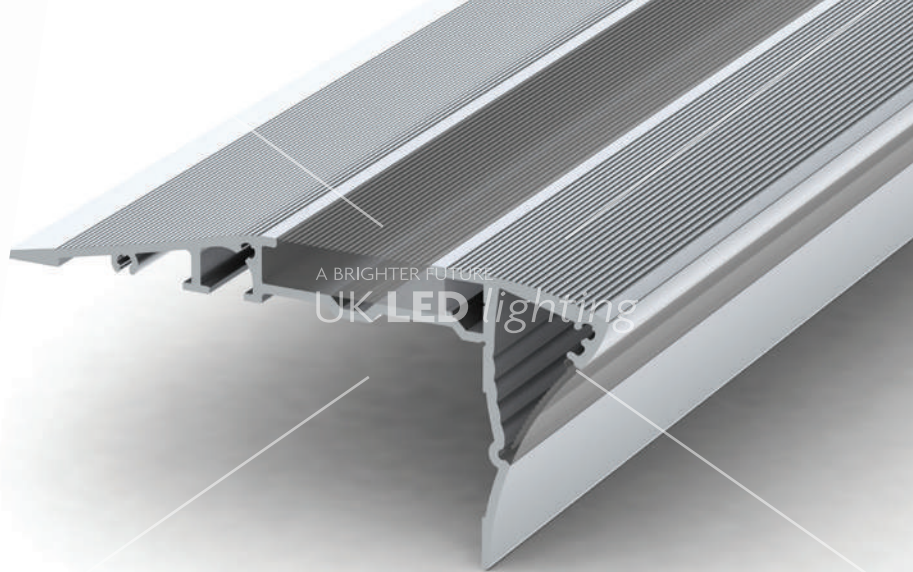
ALU-STAIR 2 LED PROFILE

ALU-STAIR 2; 100 x 46mr

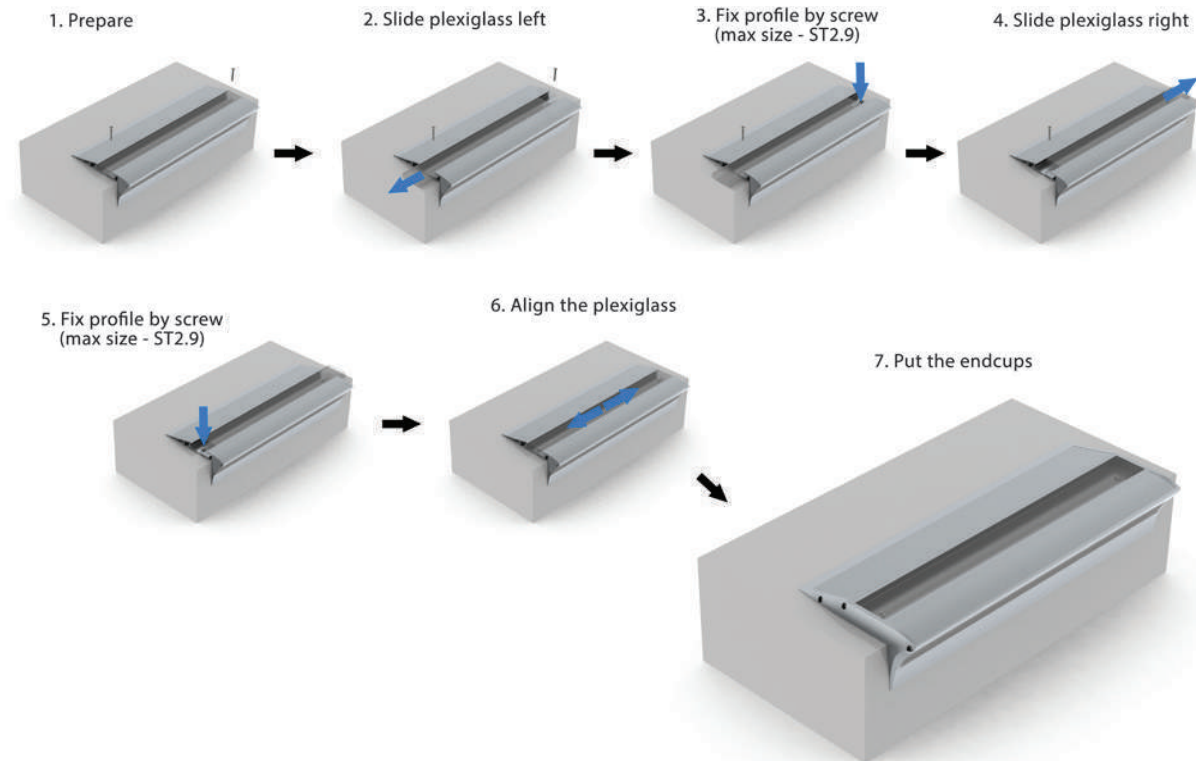
The key feature of this aluminium profile is the way it illuminates the light directly on to the stair where it is needed, but at the same time creating a soft edge of horizontal light across the diffuser so as to highlight the end step edge of each riser. This acrylic diffuser can also be replaced by an anti-slip rubber surface if required. With design matching end caps, the housing can be supplied in 1M or 2M lengths.



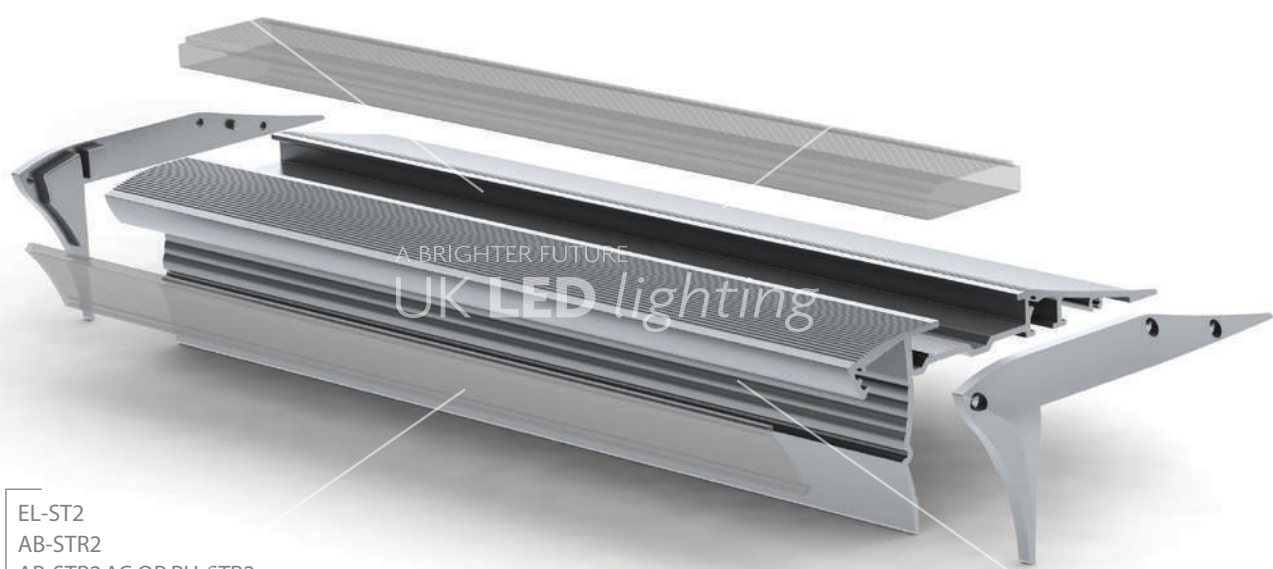
EL-ST2
AB-STR2
AB-STR2-AC
EC-ST2



ALU-STAIR 2 PROFILE MOUNT



EC-ST2
End Caps



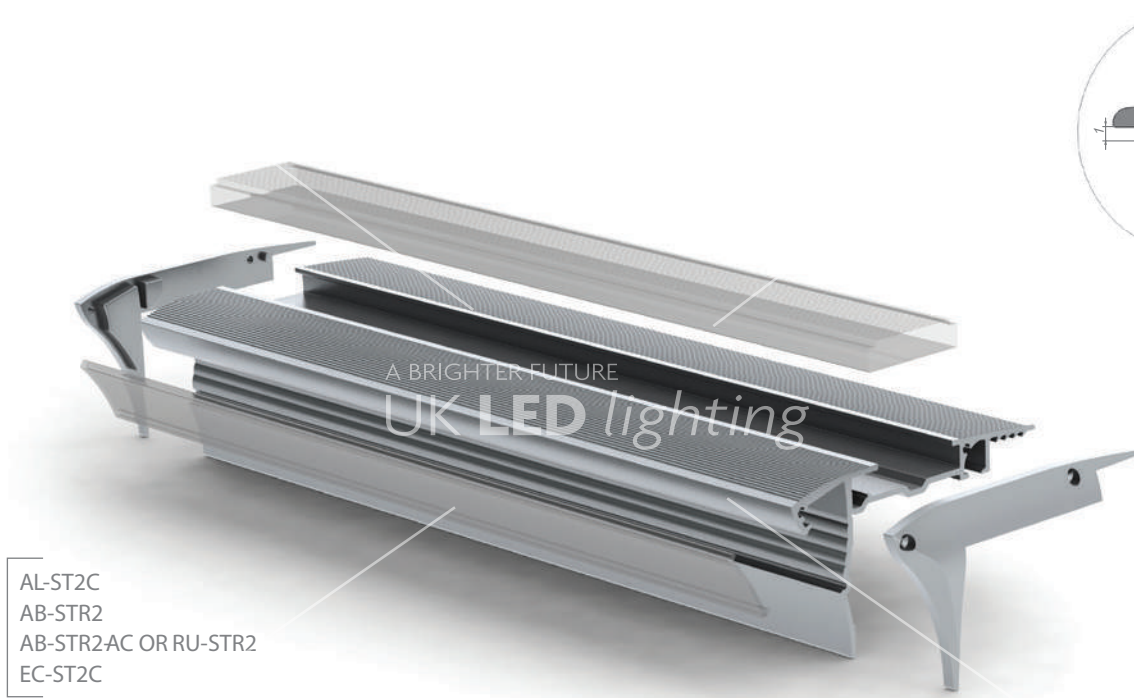
EL-ST2
AB-STR2
AB-STR2-AC OR RU-STR2
EC-ST2



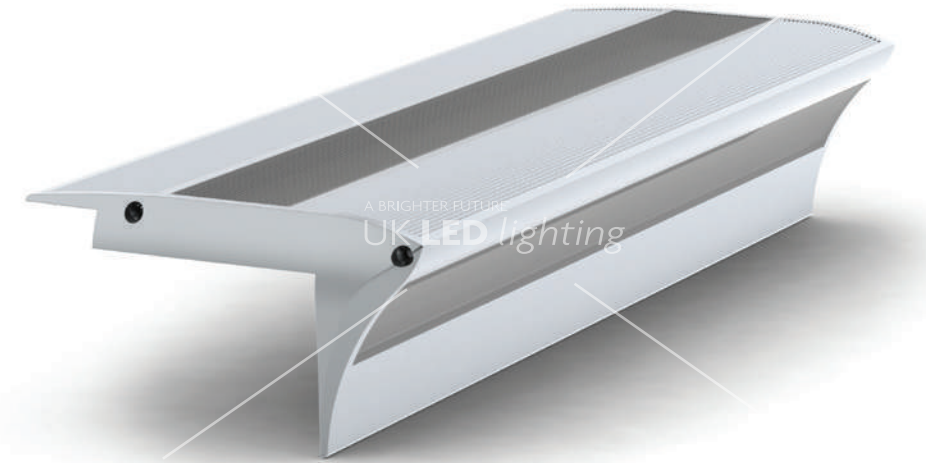
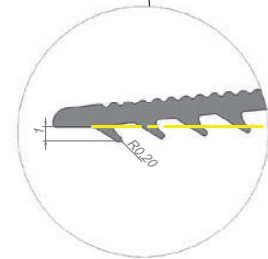
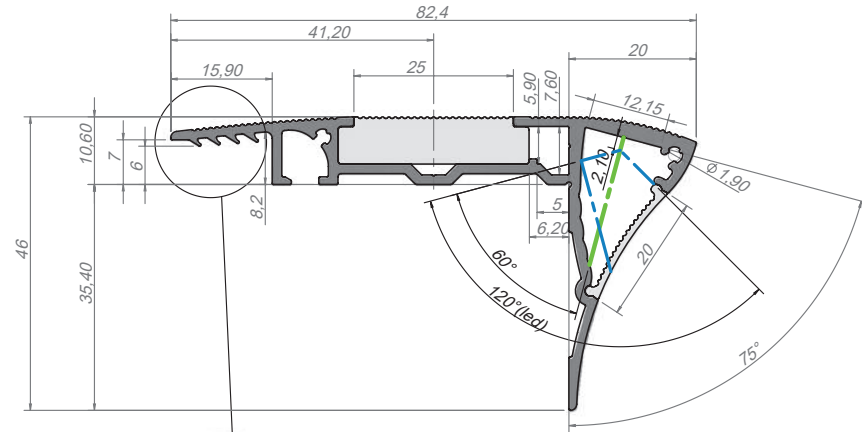
ALU-STAIR 2 CARPET LED PROFILE

ALU-STAIR 2 CARPET; 82 x 46mm

Alu Stair carpet profile is suitable for carpet thicknesses 4mm-10mm and comes with all of the key features of Alu Stair 2 including the transmission of light both onto the stair and across the horizontal linear edge of the step. An anti-slip rubber option is also available.

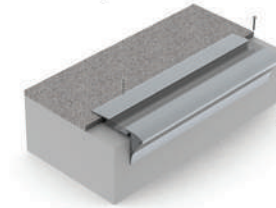


AL-ST2C
AB-STR2
AB-STR2AC OR RU-STR2
EC-ST2C

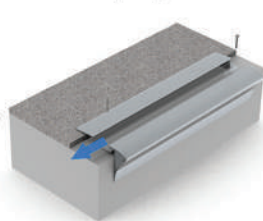


ALU-STAIR 2 CARPET PROFILE MOUNT

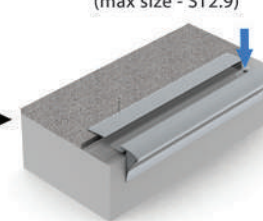
1. Prepare



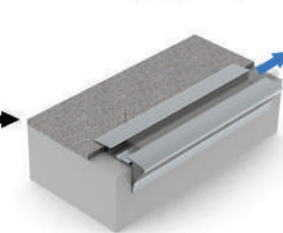
2. Slide plexiglass left



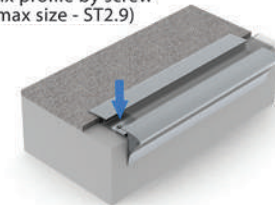
3. Fix profile by screw (max size - ST2.9)



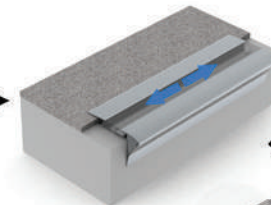
4. Slide plexiglass right



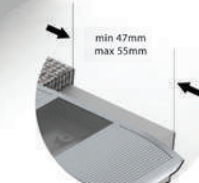
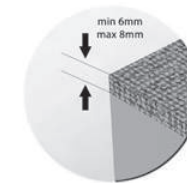
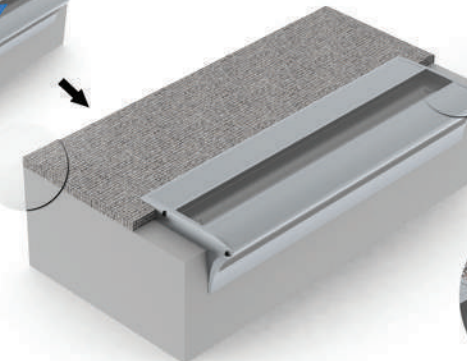
5. Fix profile by screw (max size - ST2.9)



6. Align the plexiglass



7. Put the endcaps



EC-ST2C
End Caps