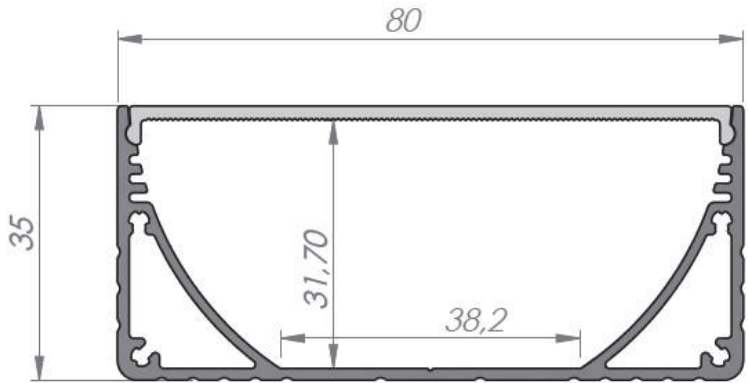


POWER LINE WIDE 80mm

PLW80N; 80 x 35mm

This is our largest LED surface ceiling aluminium profile, provided in the usual high silver anodised finish, (80mm W x 35mm H) and can accommodate any chip LED PCB solution up to 35W/M, according to the light levels required. With its specially designed internal chamber, both to eliminate light loss and guide maximum illumination directly up towards the snap on diffuser, it's perfect for office and retail ceiling solutions where both appearance and effect are of equal importance.

EL-PLW80N
AB-PLW80



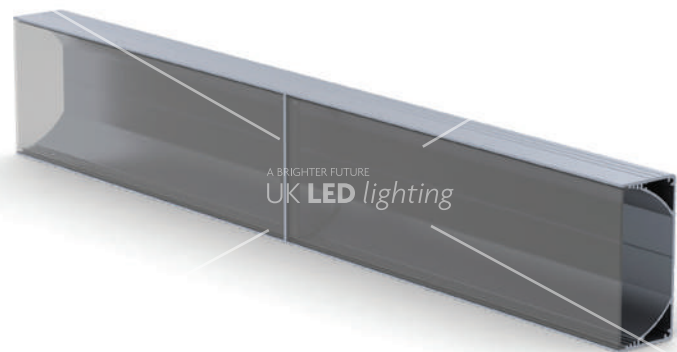
EL-PLW80N
AB-PLW80
EC-PLW80N



EC-PLW80N
Aluminum end caps



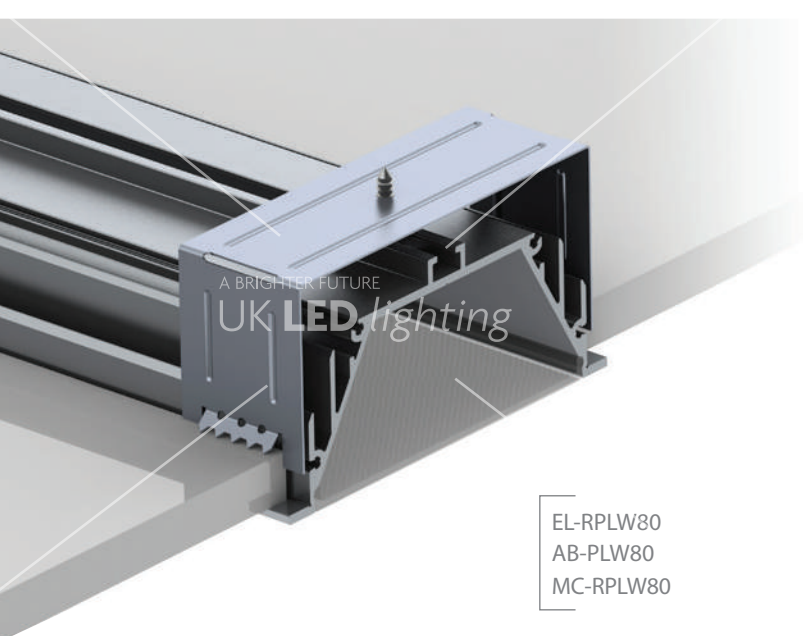
LC-PLW80N
Linear Connector



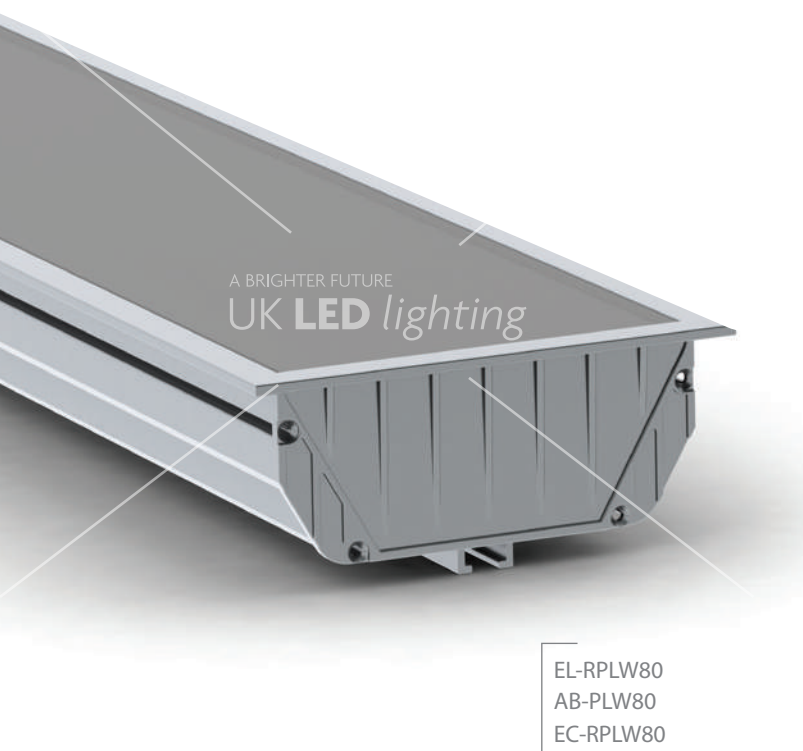
AL-PLW80N
Aluminum Profile

LC-PLW80N
Linear Connector





EL-RPLW80
AB-PLW80
MC-RPLW80

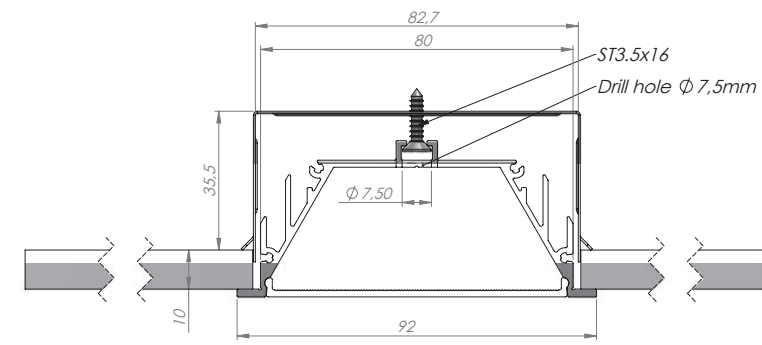
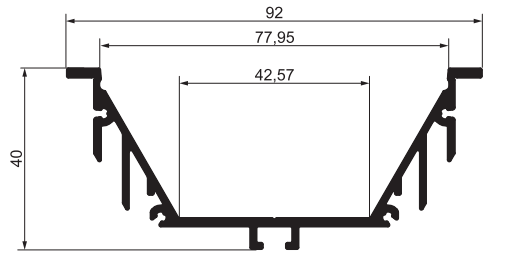


EL-RPLW80
AB-PLW80
EC-RPLW80

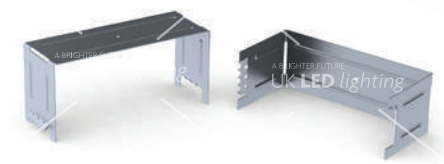
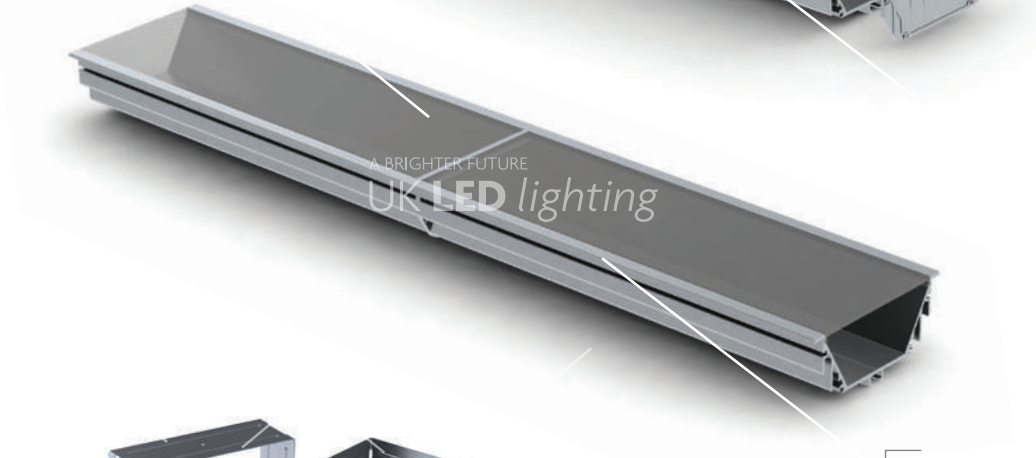
RPLW80LED PROFILE

RPLW80; 92 x 40 mm

This is the recessed version of our popular PLW80 surface mounted profile, and has been specifically designated for gypsum ceiling installations, with its very generous diffuser width (77mm) it creates a very noticeable and attractive luminaire installation even in high ceilings. There are several diffuser options available, including clear, clear prism and frosted, and also comes with matching aluminium end caps and mounting brackets.



EL-RPLW80
AB-PLW80
LC-RPLW80



MC-RPLW80
Mounting Bracket



EC-RPLW80
End Caps



LC-RPLW80
Linear Connector