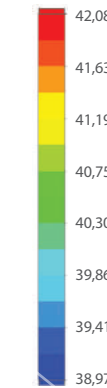
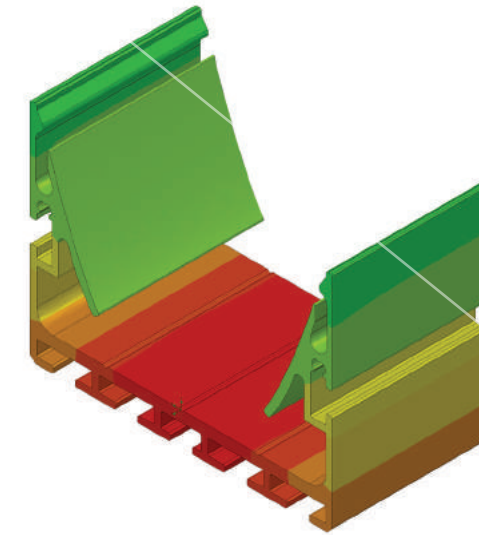
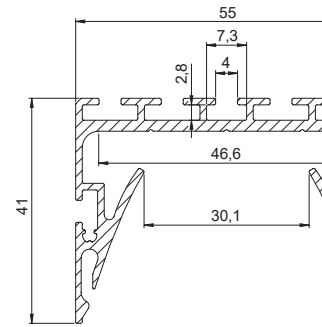




PL55 SUSPENDED LED PROFILE

PL55; 55 x 41 mm

A high performance heavy duty suspension LED profile, which is capable of an impressive 36W/M loading, because of the optimised weight and design shape, it can comfortably operate at 55 degrees@Ta=25C ambient. With a generous 55mm wide diffuser that can be supplied in opal or prismatic anti-glare option, the luminaire efficiency is very high, but with corresponding light loss kept to a minimum. Supplied in custom lengths.



Temperature (Solid) [°C]
 Temperature ambient: 25°C
 Total power: 36 W/m (72 LEDs)



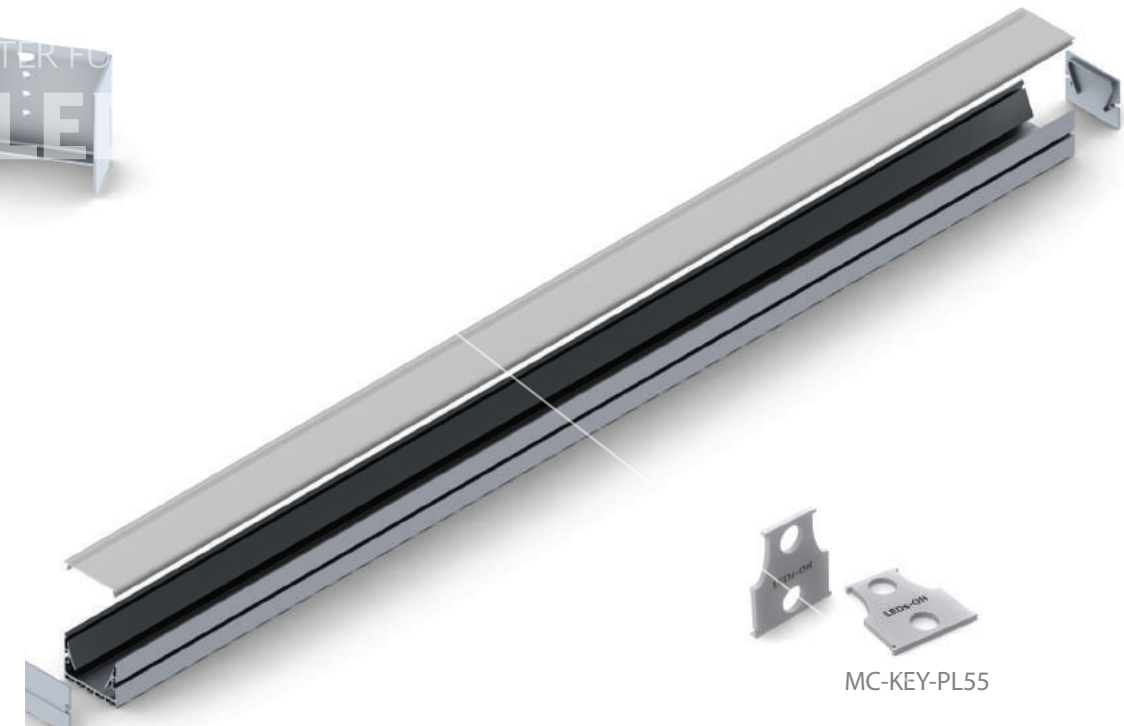
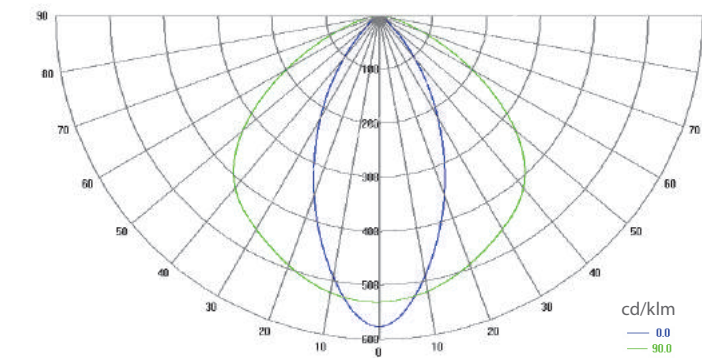
EC-PL55 End Caps



MC-PL55-MAG Mounting Brackets



Polar Candela Distribution Plot
 Using Missed Rays



MC-KEY-PL55