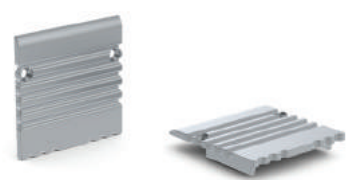
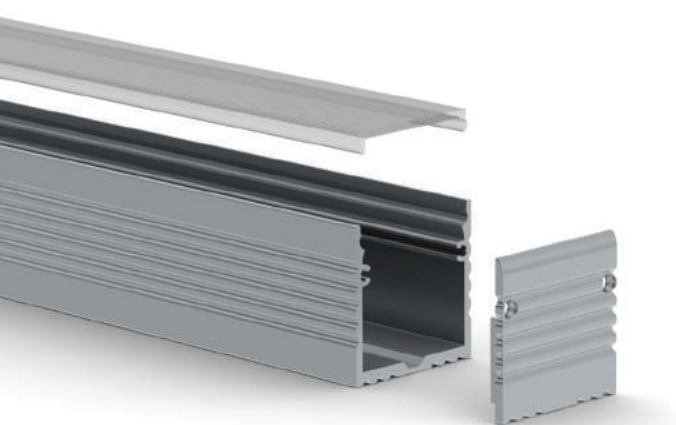
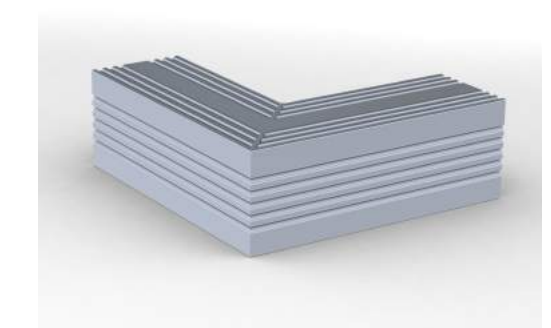
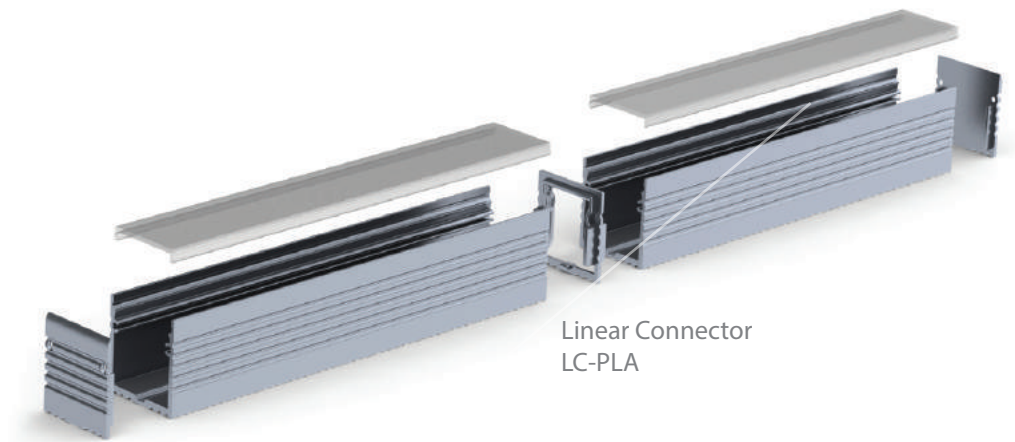
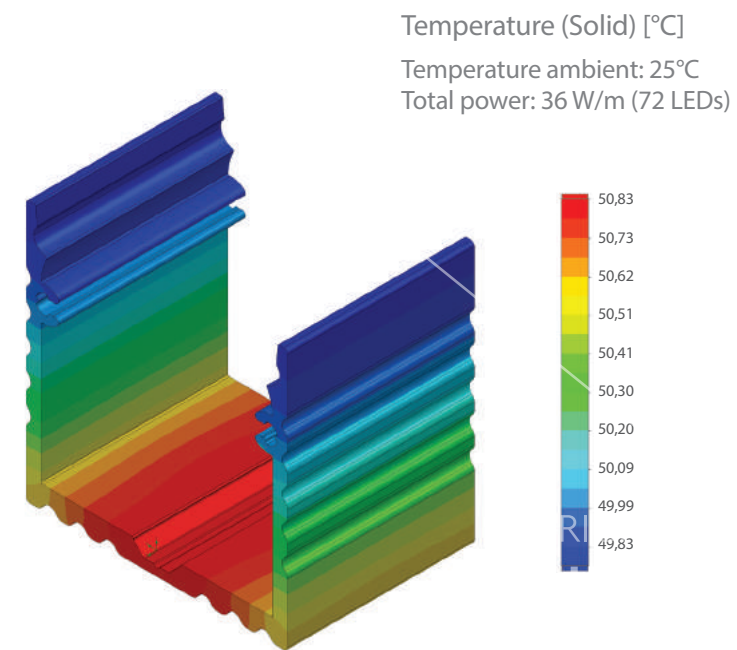
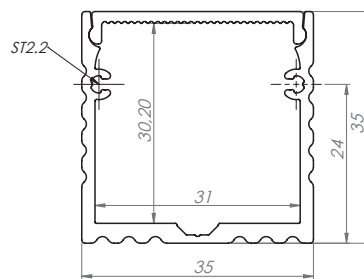


# POWER LINE 35mm

PLA; 35x35mm

This high quality silver anodised profile of contemporary design, is aimed directly at the existing fluorescent tube replacement market, utilising high output, stable energy efficient LED linear solutions. Suitable for most office, showroom and library ceiling lighting installations, since it can be supplied as a ceiling recessed, surface mount or suspension fitting according to choice.



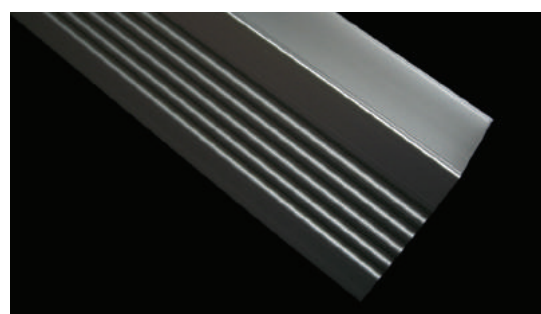
End caps type  
EC-PLA



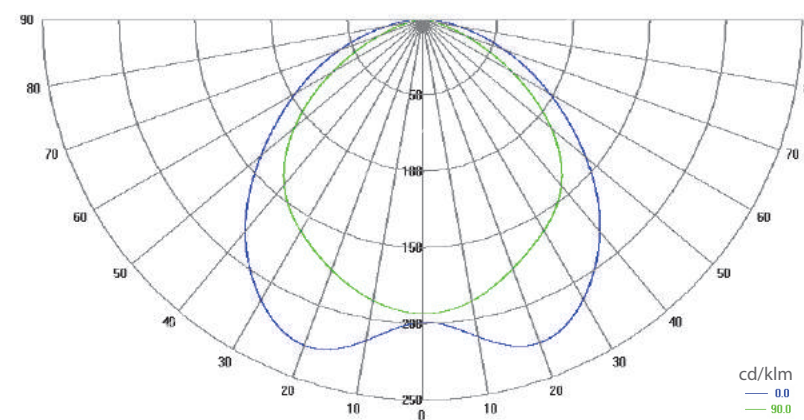
Linear Connector  
LC-PLA



90° Connector  
90-LC-PLA



Polar Candela Distribution Plot  
Using Missed Rays



End Caps  
EC-PLA

90° Connector  
90-LC-PLA

